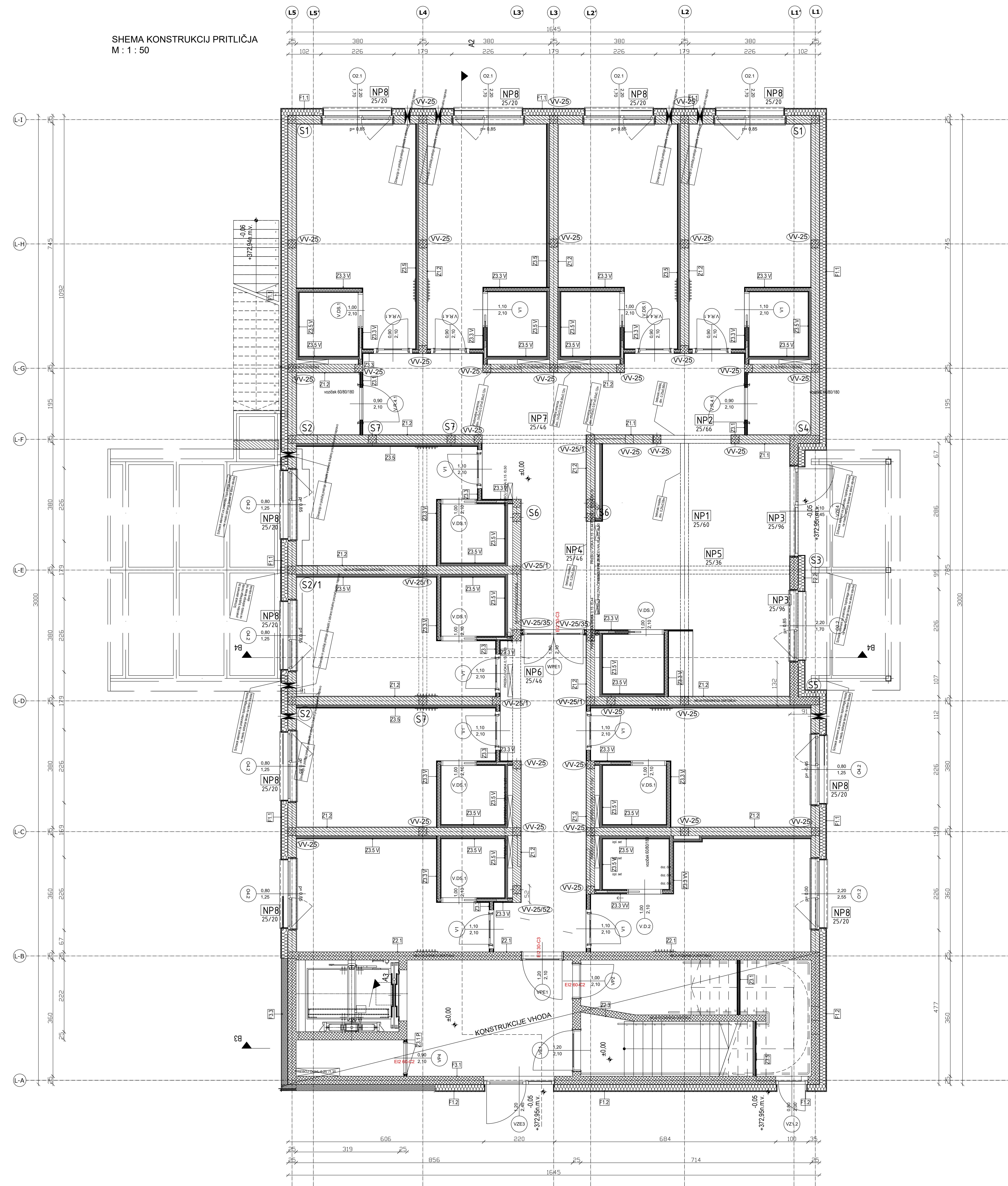
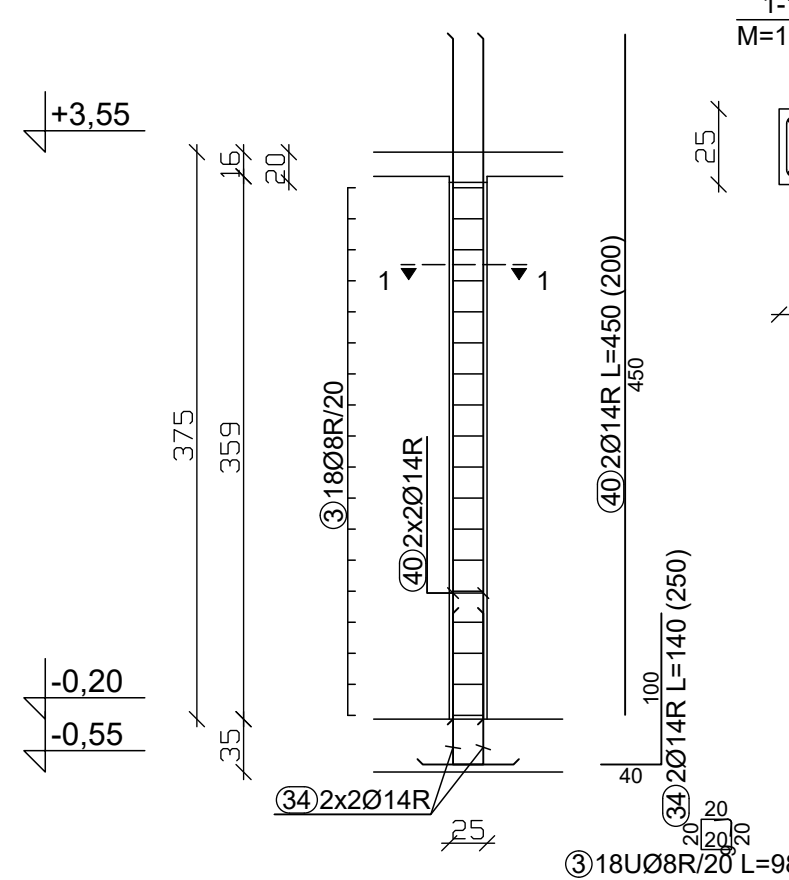


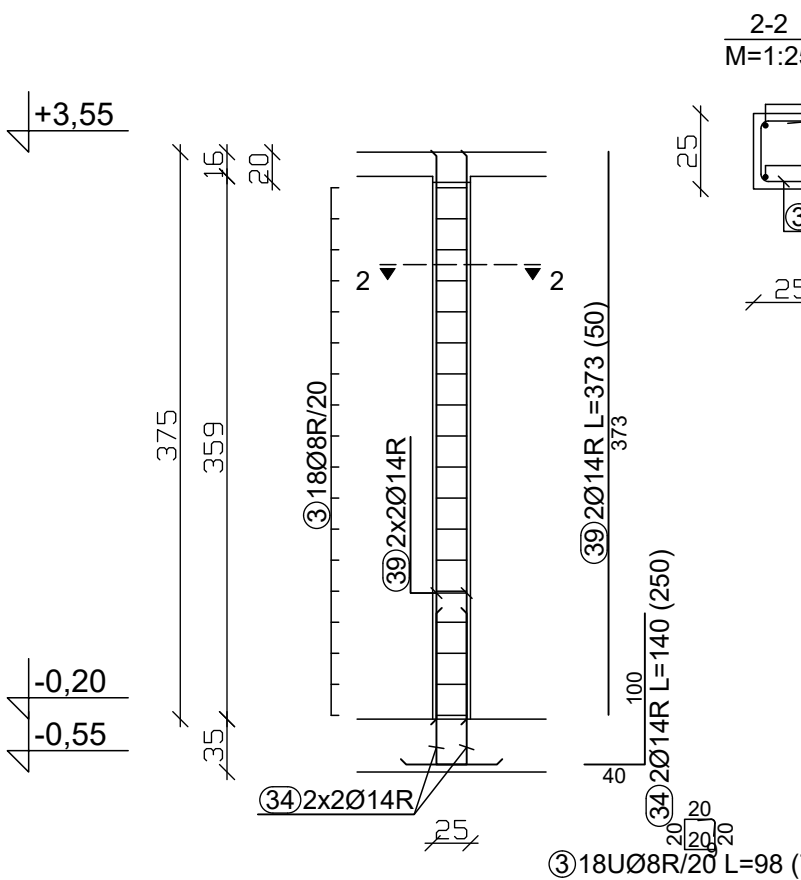
HEMA KONSTRUKCIJ PRITLIČJA
M : 1 : 50



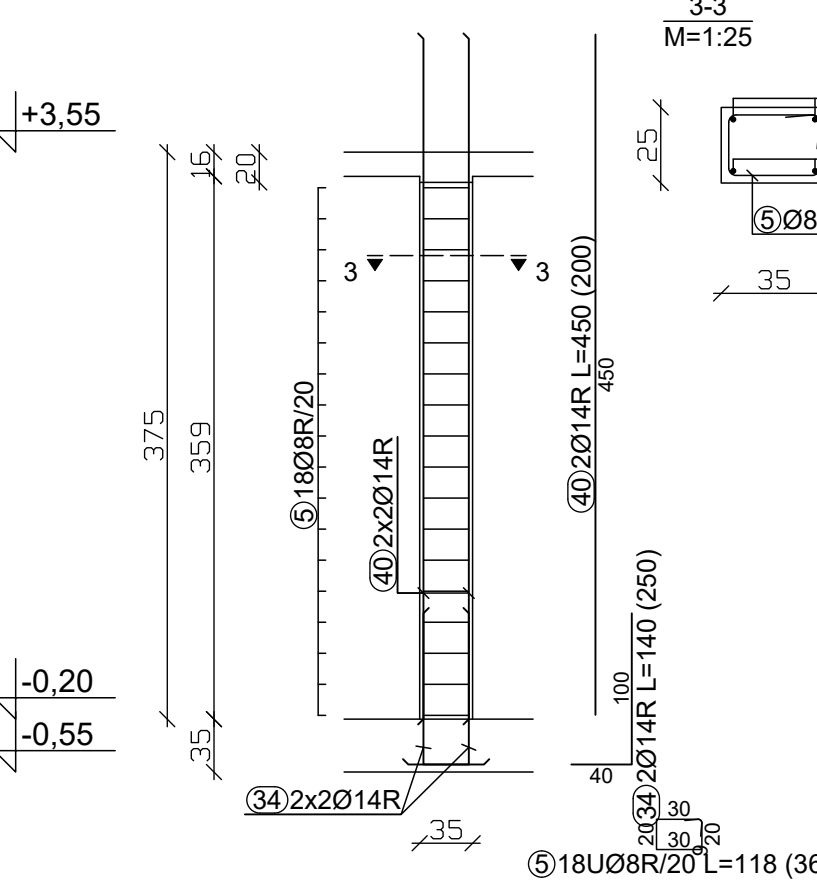
ARMATURA VERTIKALNE VEZI VV-25
25/25 CM, kom : 32
M : 1 : 50



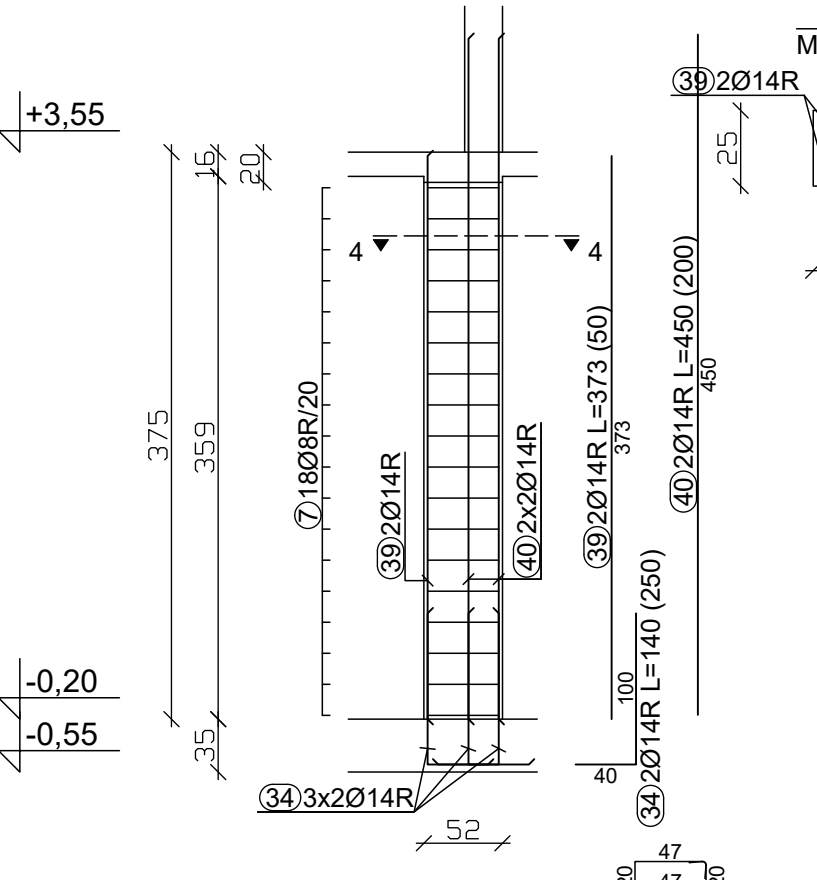
ARMATURA VERTIKALNE VEZI VV-25/1
25/25 CM, kom : 5
M : 1 : 50



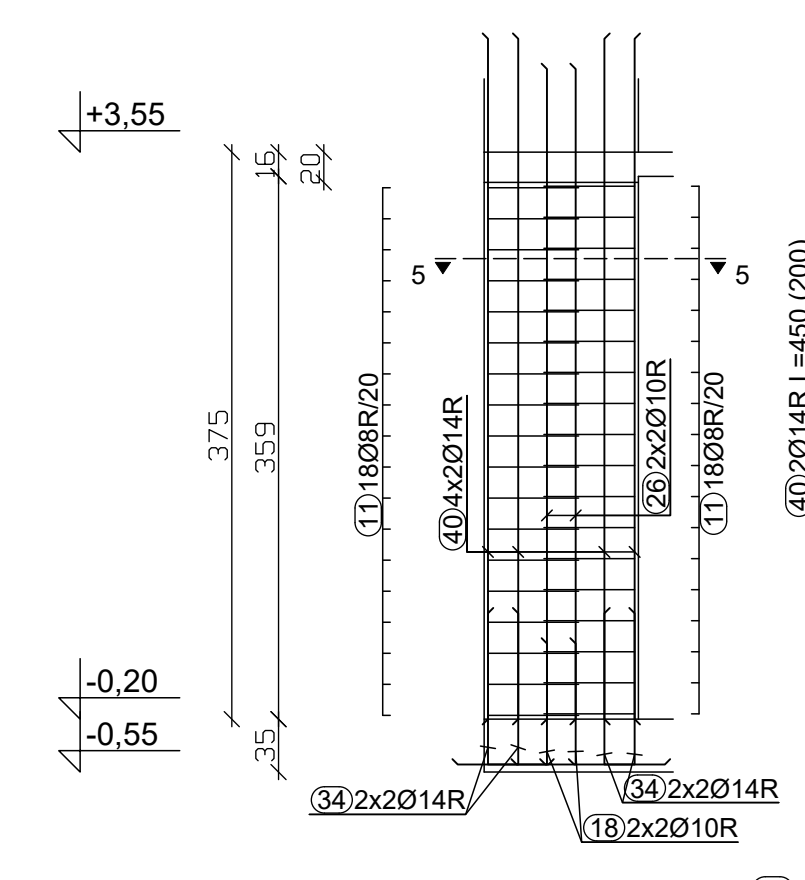
ARMATURA VERTIKALNE VEZI VV-25/35
25/25 CM, kom : 2
M : 1 : 50



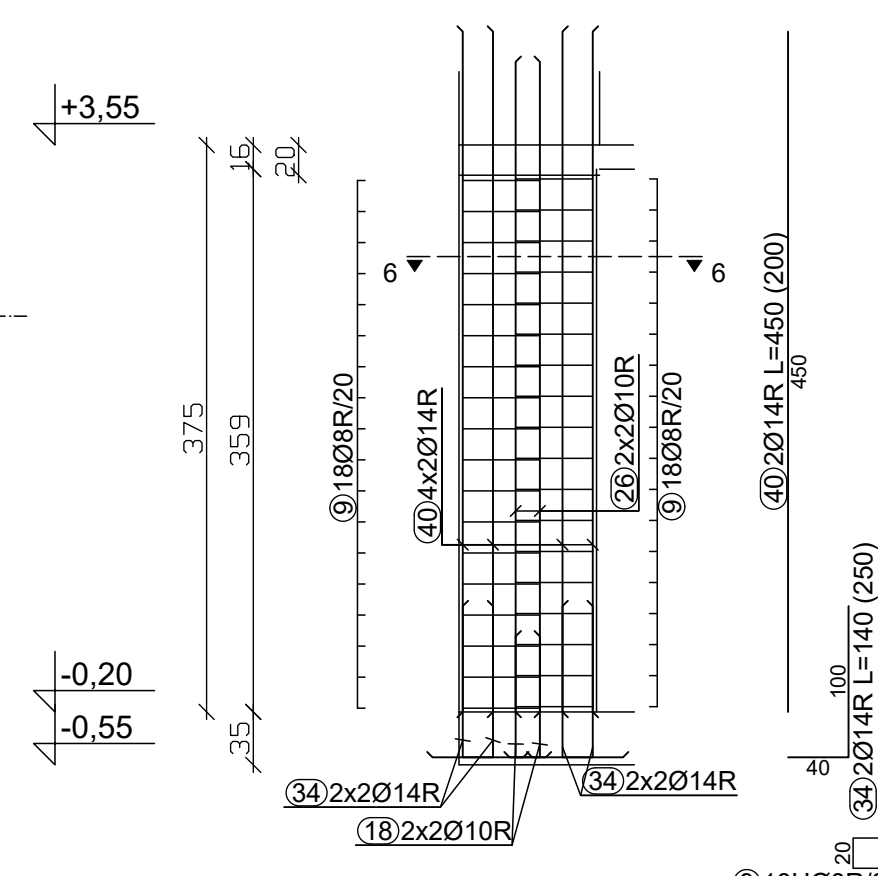
ARMATURA VERTIKALNE VEZI VV-25/52
25/25 CM, kom : 1
M : 1 : 50



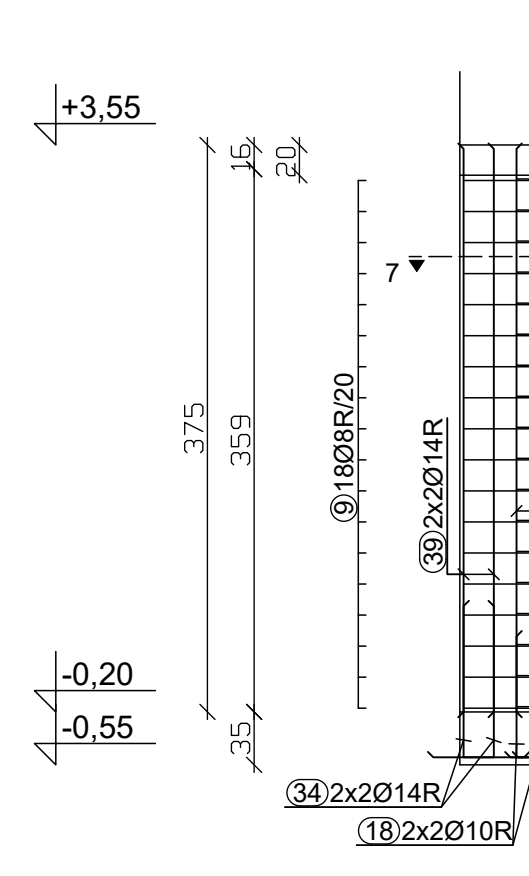
ARMATURA STEBRA S1
25/102 CM, kom : 2
M : 1 : 50



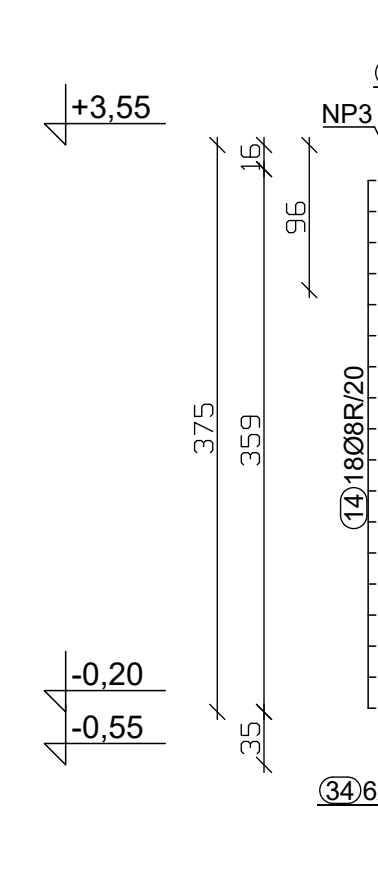
ARMATURA STEBRA S2
25/102 CM, kom : 2
M : 1 : 50



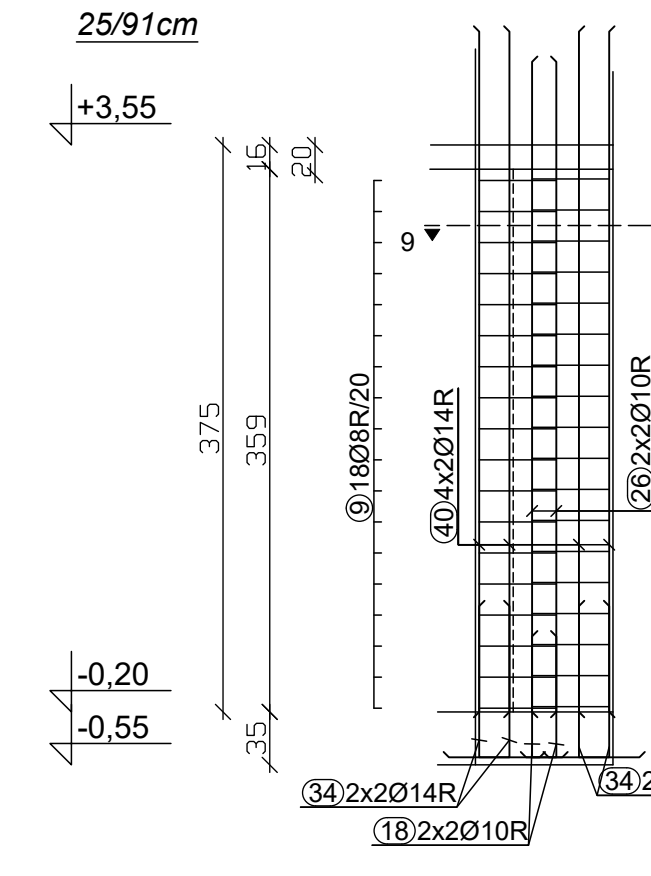
ARMATURA STEBRA S2/1
25/102 CM, kom : 1
M : 1 : 50



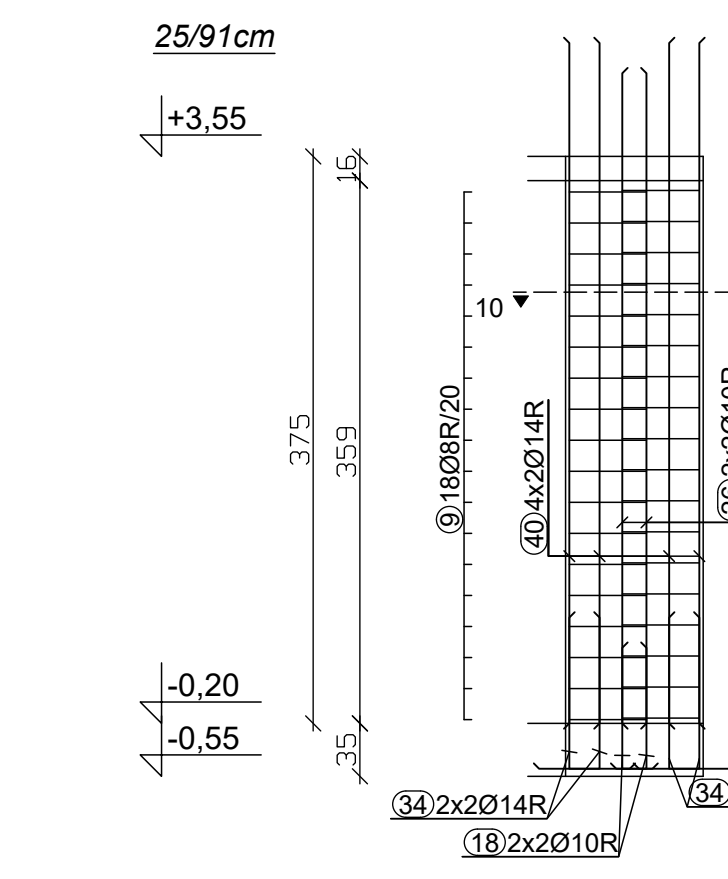
ARMATURA STEBRA S3
25/99 CM, kom : 1
M : 1 : 50



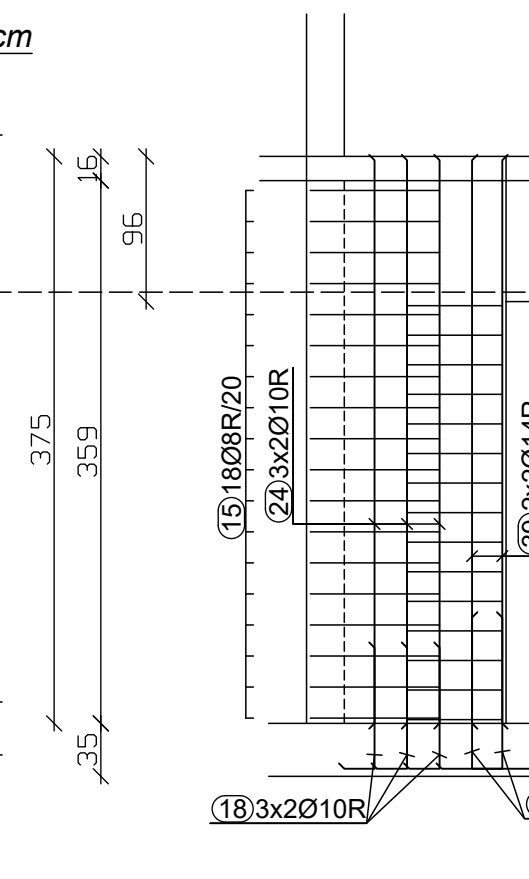
ARMATURA STEBRA S4
92-91/25 CM, kom : 1
M : 1 : 50



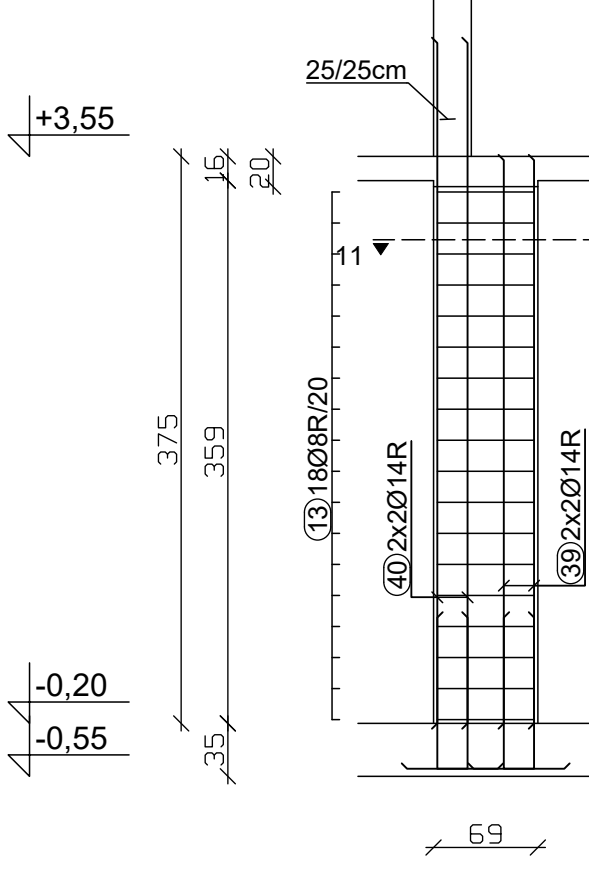
ARMATURA STEBRA S5
92-91/25 CM, kom : 1
M : 1 : 50



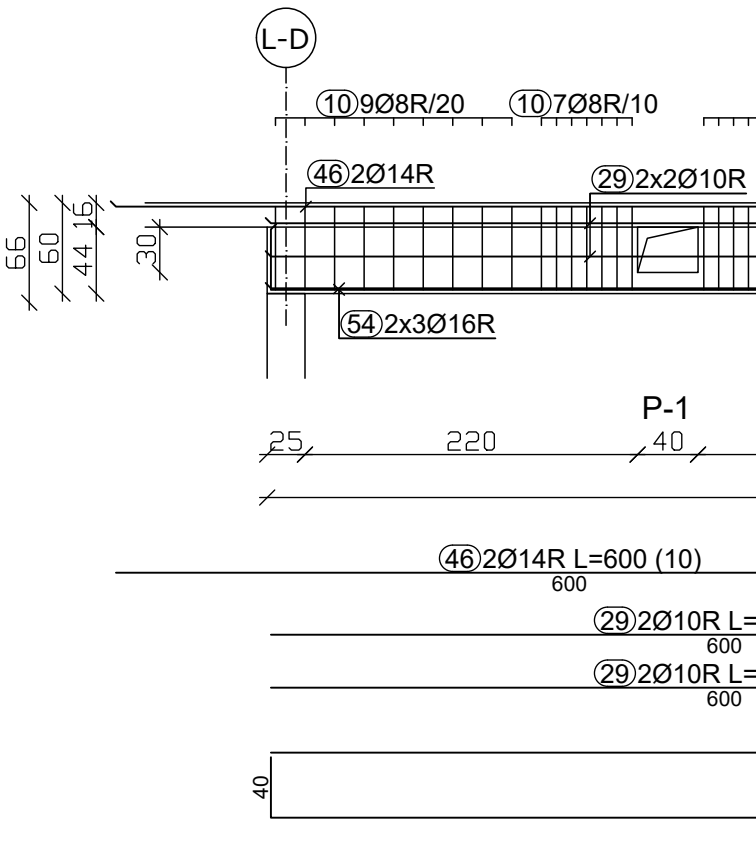
ARMATURA STEBRA S6
25/69 CM, kom : 2
M : 1 : 50



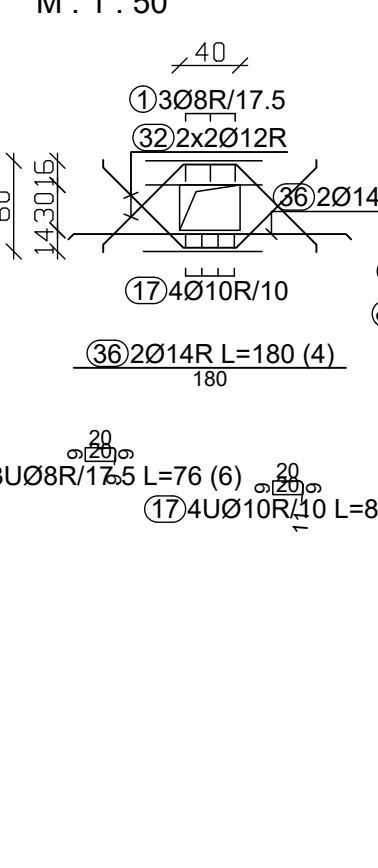
ARMATURA STEBRA S7
25/66 CM, kom : 3
M : 1 : 50



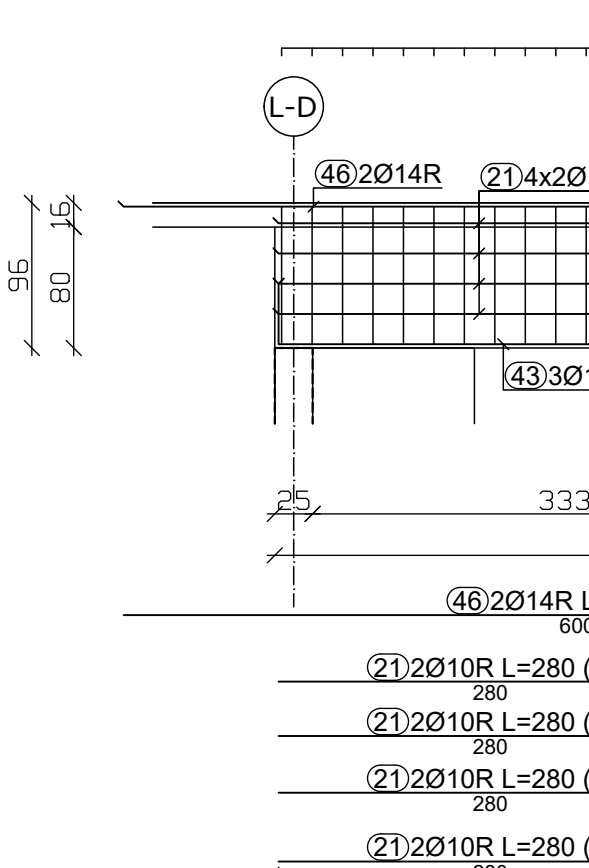
ARMATURA NOSILCA NP1
25/60 CM, kom : 1
M : 1 : 50



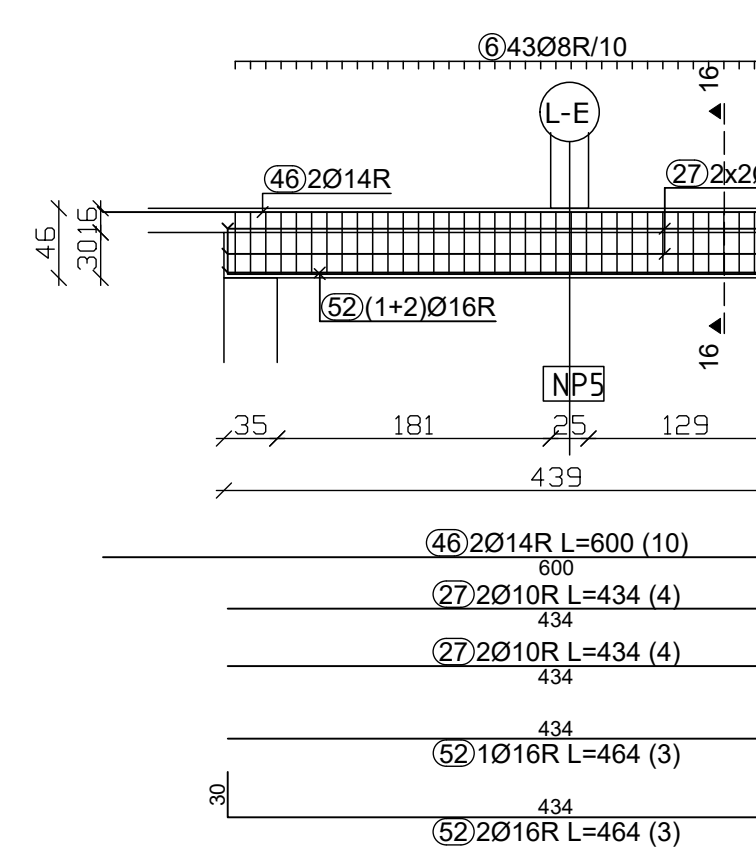
ARMATURA NOSILCA NP2
25/66 CM, kom : 1
M : 1 : 50



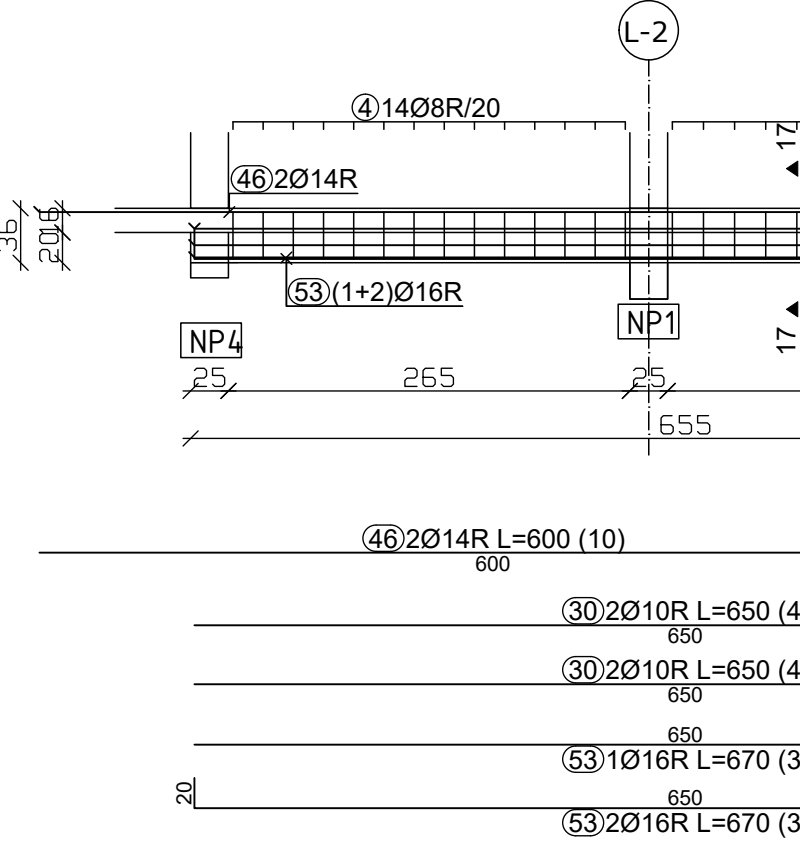
ARMATURA NOSILCA NP3
25/66 CM, kom : 1
M : 1 : 50



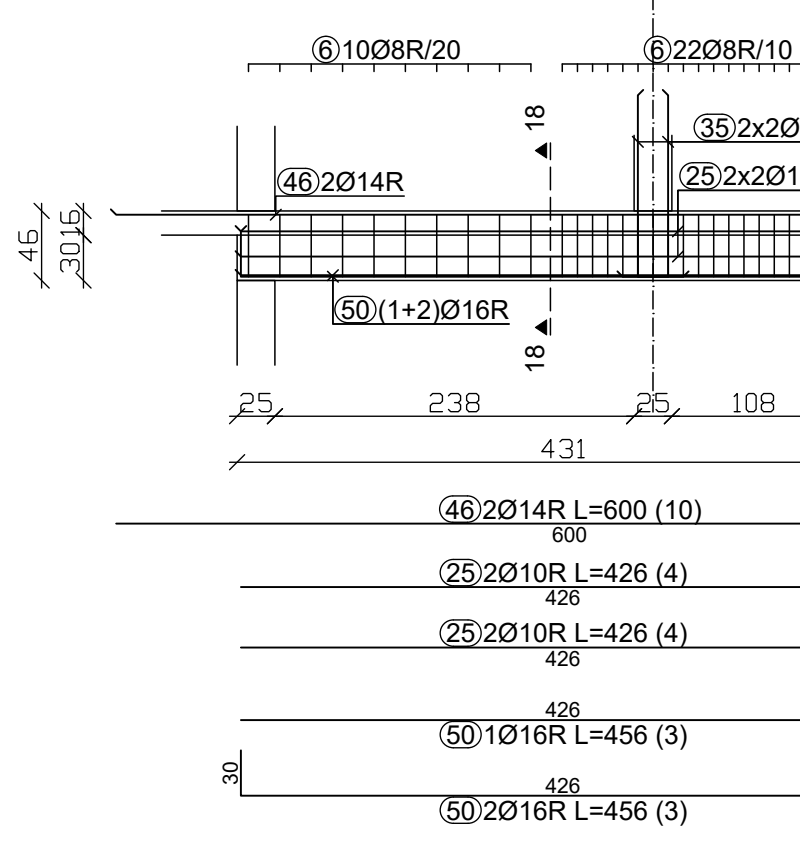
ARMATURA NOSILCA NP4
25/46 CM, kom : 1
M : 1 : 50



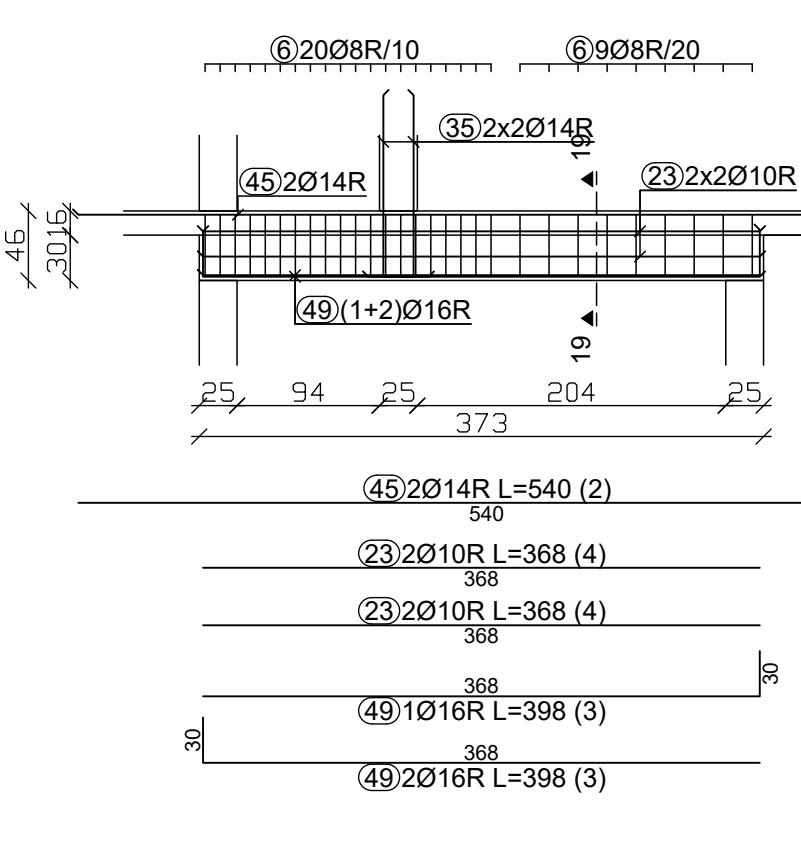
ARMATURA NOSILCA NP5
25/36 CM, kom : 1
M : 1 : 50



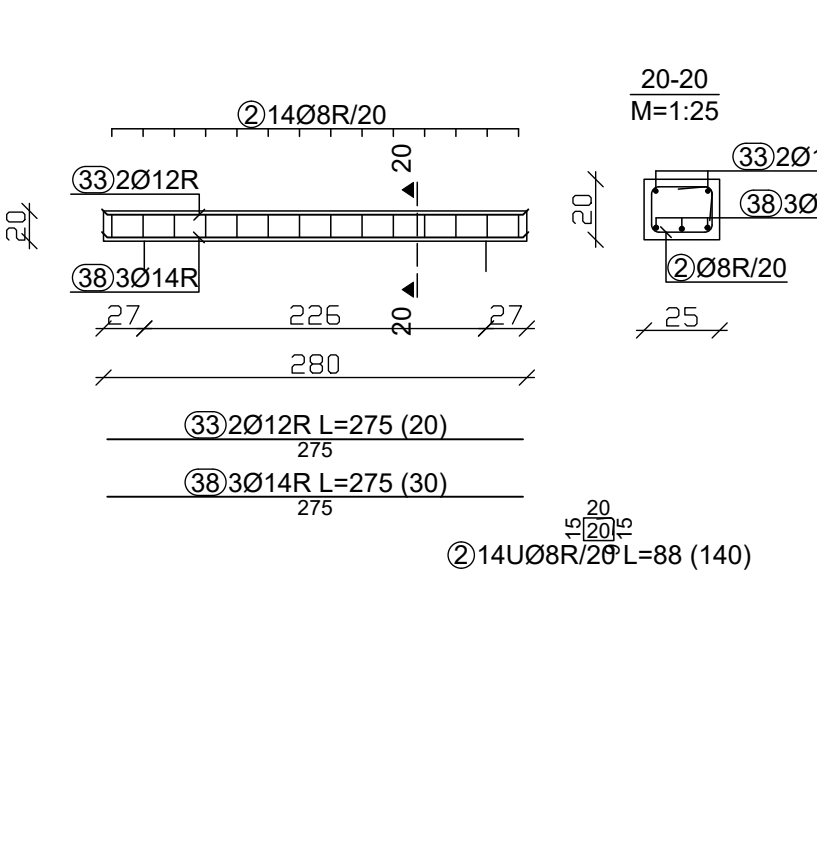
ARMATURA NOSILCA NP6
25/46 CM, kom : 1
M : 1 : 50



ARMATURA NOSILCA NP7
25/46 CM, kom : 1
M : 1 : 50



ARMATURA NOSILCA NP8
25/46 CM, kom : 10
M : 1 : 50



Pala - specifikacija		oznaka i mere		Ø	lj	n	lgn
kom	[mm]	[mm]	[mm]	[mm]	[mm]	[mm]	[mm]
4.050 BLOK, OBJEKT C- KONSTRUKCIJE PRITLIČJA (1 kom)							
1	10	10	10	8	0.75	6	4.56
2	10	10	10	8	0.98	140	123.30
3	10	10	10	8	0.98	720	705.60
4	10	10	10	8	1.16	30	34.80
5	10	10	10	8	1.16	30	42.40
6	10	10	10	8	1.38	104	141.44
7	10	10	10	8	1.52	18	27.36
8	10	10	10	8	1.54	18	27.72
9	10	10	10	8	1.60	215	344.00
10	10	10	10	8	1.64	96	91.84
11	10	10	10	8	1.78	72	128.16
12	10	10	10	8	1.84	15	27.60
13	10	10	10	8	1.86	35	66.96
14	10	10	10	8	1.94	18	34.60
15	10	10	10	8	2.30	18	41.40
16	10	10	10	8	2.36	42	99.12
17	10	10	10	10	0.80	6	6.40
18	10	10	10	10	1.00	38	38.00
19	10	10	10	10	1.80	18	32.40
20	10	10	10	10	2.05	4	10.00
21	10	10	10	10	2.36	6	22.40
22	10	10	10	10	3.00	4	12.00
23	10	10	10	10	3.06	4	14.72
24	10	10	10	10	3.73	14	52.22
25	10	10	10	10	4.26	4	17.04
26	10	10	10	10	4.30	24	103.20
27	10	10	10	10	4.34	4	17.36
28	10	10	10	10	4.36	2	9.48
29	10	10	10	10	6.00	12	72.00
30	10	10	10	10	6.54	4	26.00
31	10	10	10	12	1.75	4	7.00
32	10	10	10	12	1.85	4	7.40
33	10	10	10	12	2.75	26	55.00
34	10	10	10	14	1.40	250	350.00
35	10	10	10	14	1.50	8	12.00
36	10	10	10	14	1.80	4	7.20
37	10	10	10	14	2.30	2	4.60
38	10	10	10	14	2.75	30	82.50
39	10	10	10	14	3.73	90	186.00
40	10	10	10	14	4.50	200	900.00
41	10	10	10	14	4.70	2	9.40
42	10	10	10	14	4.80	2	9.60
43	10	10	10	14	5.00	6	30.00
44	10	10	10	14	5.10	2	10.20
45	10	10	10	14	5.50	2	10.00
46	10	10	10	14	6.00	10	60.00

Pala - izračun		oznaka i mere		Ø	lj	n	lgn
kom	[mm]	[mm]	[mm]	[mm]	[mm]	[mm]	[mm]
4.050 BLOK, OBJEKT C- KONSTRUKCIJE PRITLIČJA (1 kom)							
1	10	10	10	8	0.75	6	4.56
2	10	10	10	8	0.98	140	123.30
3	10	10	10	8	0.98	720	705.60
4	10	10	10	8	1.16	30	34.80
5	10	10	10	8	1.16	30	42.40
6	10	10	10	8	1.38	104	141.44
7	10	10	10	8	1.52	18	27.36
8	10	10	10	8	1.54	18	27.72
9	10	10	10	8	1.60	215	344.00
10	10	10	10	8	1.64	96	91.84
11	10	10	10	8	1.78	72	128.16
12	10	10	10	8	1.84	15	27.60
13	10	10	10	8	1.86	35	66.96
14	10	10	10	8	1.94	18	34.60
15	10	10	10	8	2.30	18	41.40
16	10	10	10	8	2.36	42	99.12
17	10	10	10	10	0.80	6	6.40
18	10	10	10	10	1.00	38	38.00
19	10	10	10	10	1.80	18	32.40
20	10	10	10	10	2.05	4	10.00
21	10	10	10	10	2.36	6	22.40
22	10	10	10	10	3.00	4	12.00
23	10	10	10	10	3.06	4	14.72
24	10	10	10	10	3.73	14	52.22
25	10	10	10	10	4.26	4	17.04
26	10	10	10	10	4.30	24	103.20
27	10	10	10	10	4.34	4	17.36
28	10	10	10	10	4.36	2	9.48
29	10	10	10	10	6.00	12	72.00
30	10	10	10	10	6.54	4	26.00
31	10	10	10	12	1.75	4	7.00
32	10	10	10	12	1.85	4	7.40
33	10	10	10	12	2.75	26	55.00
34	10	10	10	14	1.40	250	350.00
35	10	10	10	14	1.50	8	12.00
36	10	10	10	14	1.80	4	7.20
37	10	10	10	14	2.30	2	4.60
38	10	10	10	14	2.75	30	82.50
39	10	10	10	14	3.73	90	186.00
40	10	10	10	14	4.50	200	900.00
41	10	10	10	14	4.70	2	9.40
42	10	10	10	14	4.80	2	9.60
43	10	10	10	14	5.00	6	30.00
44	10	10	10	14	5.10	2	10.20
45	10	10	10	14	5.50	2	10.00
46	10	10	10	14	6.00	10	60.00

Izračun			
Ø [mm]	lj [m]	Teba snaga [g/m ²]	Teba [kg]
RA1			
8	1941.16	0.41	753.93
10	433.74	0.65	281.50
12	69.40	0.92	63.85
14	1872.80	1.25	2034.35
16	223.24	1.64	365.67
(RA1)			
			3599.29
(RA)			
			3599.29